

PTFE-LINED STAINLESS STEEL GAS PIGTAILS

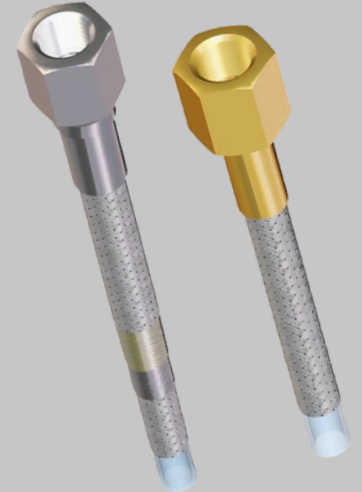
Long-life PTFE-lined pigtails from 3000 PSI - 6000 PSI rated

UNISOURCE offers the industry's most complete assortment of PTFE-lined high-pressure gas pigtails. Each pigtail assembly is pressure tested to 1-1/2 times the rated working pressure. Pigtails are also marked with manufacturer, construction, pressure rating, and date. All pigtails surpass the requirements of CGA E.9.

Style TSC pigtails are the workhorse of the industry. Light and highly flexible, this style carries a working pressure rating of **3000 PSI** maximum working pressure. Each pigtail assembly is tested to 4500 PSIG. Constructed with a white, non-conductive PTFE liner. Fittings are available in both brass and stainless steel. Stainless steel full-time swivel ends are also a standard stock item for this hose.

Style TSCZ "POST SINTERED" pigtails have become one of our most popular hose styles. Post Sintered hoses reduce permeation by approx. 75%. Style TSCZ hose also feature the addition of a second reinforcing braid. this provides a working pressure of **3600 PSI** maximum working pressure for additional strength and safety. TSCZ is the preferred choice for fill manifolds. Fitting options are identical to Style TSC hose.

Style TSHD pigtails carry the highest pressure rating in the industry — **6000 PSI** maximum working pressure. Built with a heavy-duty double stainless steel braid and double spiral wrap reinforcing, and black static-conducting PTFE core. Fittings are stainless steel FNPT or FJIC swivel. Style TSHP, 5000 PSI available on special request.



Fitting Options:

Style TSC & TSCZ: 1/4" FNPT or MNPT in brass or 316L stainless steel; 1/4" FNPT 316L stainless steel full-time swivel end; VCR, VCO, tube and compression fittings in stainless steel.

Style TSHD: 1/4" FNPT or -4 FJIC flare in 316L stainless steel.

Additional Options:

Stainless steel armor casing to protect the braid and prevent kinking.

Cleaning and packaging for oxygen service per CGA G-4.1.

Brass or stainless steel CGA nut and nipple installed and pressure tested.

Brass or plastic CGA handtight nut and o-ring nipple installed and pressure tested.

Brass or stainless steel CGA nut and check-valve nipple installed and pressure tested.

Brass street elbow installed and pressure tested.

Brass DVP pipe thread extension adapter – 3" long, hex style.

Both Style TSC and TSCZ feature our stainless steel **armor casing** for whip check protection, kink resistance, and abrasion.



All pigtails below constructed with Series 300 stainless steel reinforcing. All Styles in 1/4" nominal size.

Style	Avg. I.D. (In.)	Avg. O.D. (In.)		Max W.P. (PSI)	Min. Burst (PSI)	Min.Bend Radius (In.)		Weight (Lbs./Ft.)		*Temp. Rating (Deg.F.)	Liner Conductive (Yes/No)
		w/armor	w/o armor			w/armor	w/o armor	w/armor	w/o armor		
TSC	0.25	0.540	0.375	3000	12,000	3.0	2.0	0.277	0.098	-65 to 450	No
TSCZ	0.25	0.625	0.420	3600	14,400	3.0	3.0	0.300	0.136	-65 to 450	No
TSHD	0.229	0.660	0.495	6000	24,000	5.0	3.0	0.454	0.240	-65 to 400	Yes

* Based on intermittent service.