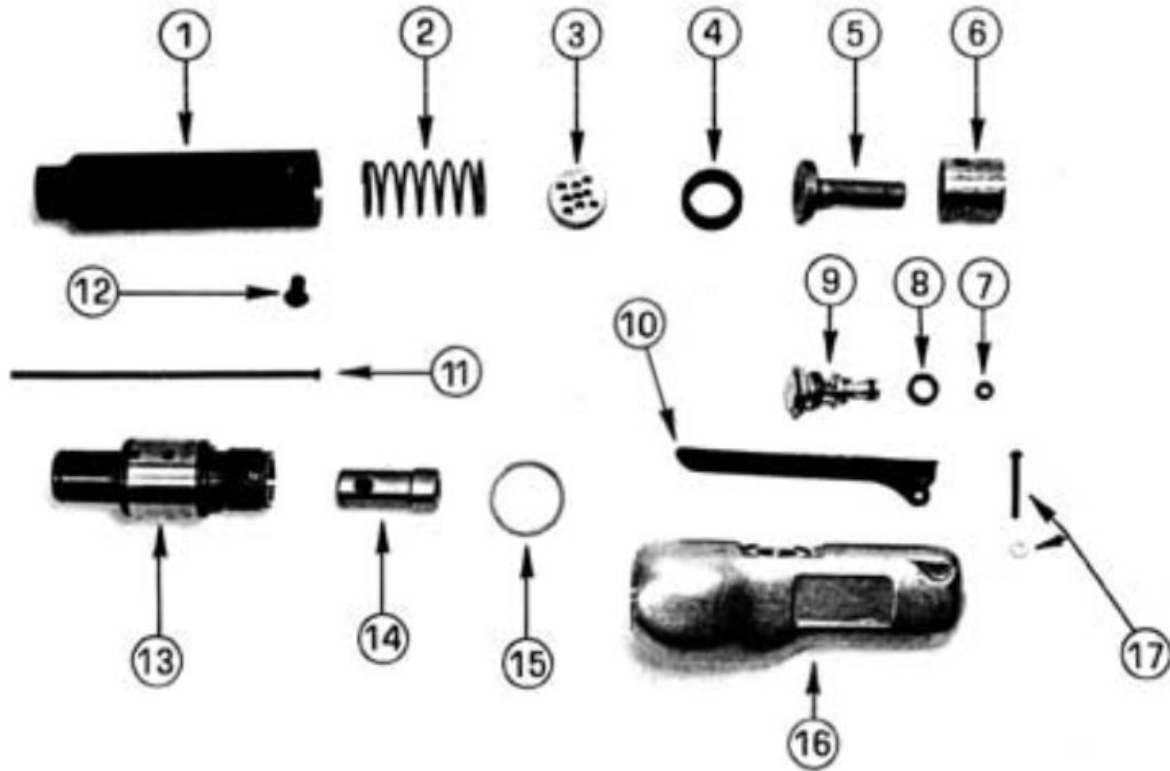


Breakdown Sheet

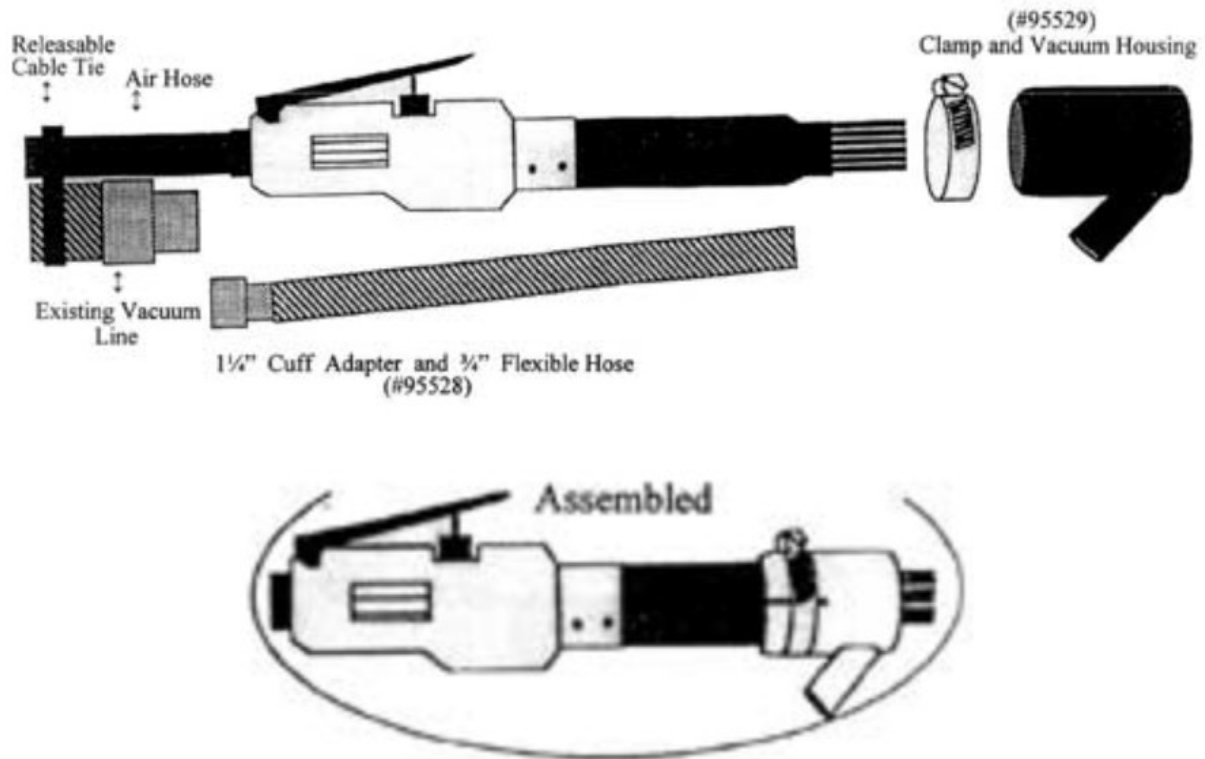
Needle Scaler – Straight Handle

Model 95511 Needle Scaler Instructions & Parts



Item	Part Number	Description	Item	Part Number	Description
1	95501	Housing	10	92600	Lever
2	95505	Spring	11	250027	Needle (Set of 9)
3	95504	Needle Holder	12	95007	Screw (2 Req.)
4	95503	Cushion	13	93100	Barrel
5	95502	Driver	14	90300	Piston
6	95506	Spacer Ring	15	92500	Locking Washer
7	91301	Small Rubber Seal	16	90102	Straight Handle
8	91300	Large Rubber Seal	17	73900	Pin and Washer
9	90500	Trigger Assembly			

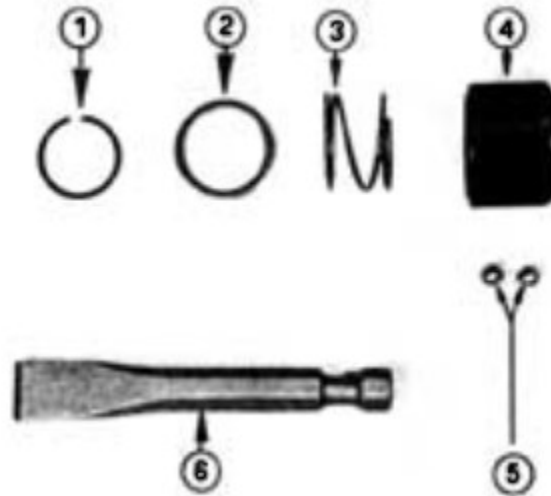
Model 95520 Needle Scaler Vacuum Adapter
Instructions & Parts
(For Models 95510 & 95511)



Parts Provided

Part Number	Description
95529	Clamp Vacuum Housing
95528	3/4" Flexible Hose 1 1/4" Cuff Adapter Releasable Cable Tie

Model 95525 Needle Scaler Chisel Adapter
Instructions & Parts
(For Models 95510 & 95511)



Item	Part Number	Description
1	91200	Retainer Ring
2	93300	Washer
3	93200	Spring
4	93400	Collar
5	91500	Steel Ball
6	10400	Flat Chisel

Instructions

1. Remove set screw from model 95510 or 95511.
2. Remove the complete needle scaler from the front of the hammer barrel, including the driver and spacer ring.
3. Install (2) steel balls.

Put on the collar, spring, washer, and retainer.