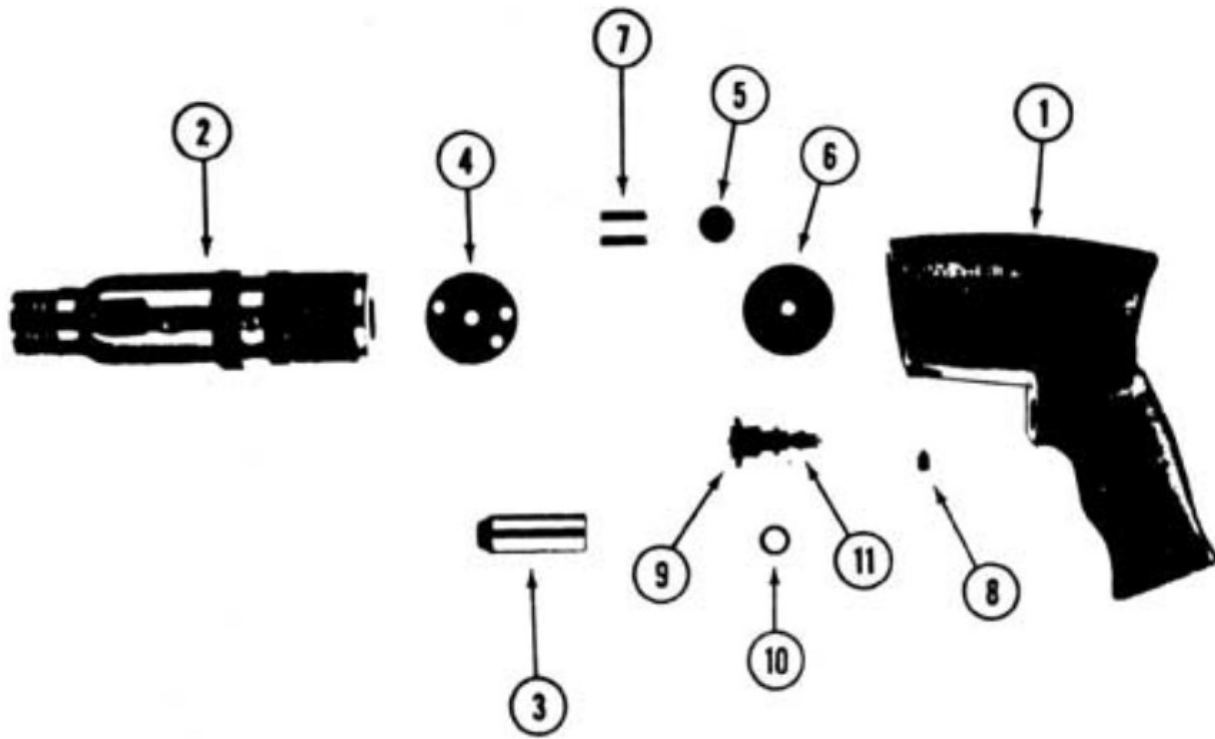


Breakdown Sheet
Equalizer – Pistol Grip
Model 240008 Needle Scaler Instructions & Parts



Item	Part Number	Description
1	240100	Pistol Handle
2	240202	Barrel
3	240600	Piston
4	240301	Front Valve Block
5	241800	Wafer
6	240501	Back Valve Block
7	240700	Pin (2 req.)
8	240800	Socket Set Screw
9	90500	Trigger Assembly
10	91300	Large Rubber Seal
11	91301	Small Rubber Seal

Lubrication

Before using a new tool, pour a small amount of oil into the air inlet, connect the hose, and run the tool momentarily to distribute the oil into all of the working parts. The best oil to use is Superior Pneumatic Oil, but if Superior Pneumatic Oil is not available, do not use oil heavier than SAE #10. Thereafter, insert several drops of oil into the air inlet after every two or three hours of operation. If the unit is in constant use, it must be equipped with an airline lubricator and filter.

Operation

Always wear safety goggles and protective clothing when in operation. The force and speed of the hammer blows can be regulated by the depression of the trigger. Light pressure on the trigger will start the hammer blowing at a slow rate. Full power is reached when the trigger is fully depressed. Maximum efficiency is reached when operated on 90 PSI at 4 CFM.

Caution

1. Never operate air hammers without a chisel or a chisel that is not securely against work.
2. Disconnect the air supply before disassembly.
3. The barrel must be kept tight at all times. A loose barrel will cause the stripping of threads in the handle and loss of power.
4. Connect the hose whip directly to the inlet bushing to eliminate operator fatigue and facilitate the maneuverability of the tool.

Disassembly

1. Clamp the barrel in the vise on the flats provided and loosen the set screw in the handle.
2. Unscrew the handle from the barrel, and with the barrel pointing down, lift the handle off the barrel.
3. Lift the rear valve block, wafer, and front valve block with pins, off the barrel.
4. Unscrew the trigger assembly counter clockwise.

Note: Any tools needing major work should be taken to a factory or authorized repair station.

Assembly

1. Thoroughly clean and inspect all parts for obstructions.

Note: Replace trigger washers with new washers.

2. Screw the trigger assembly back into the handle and tighten it.

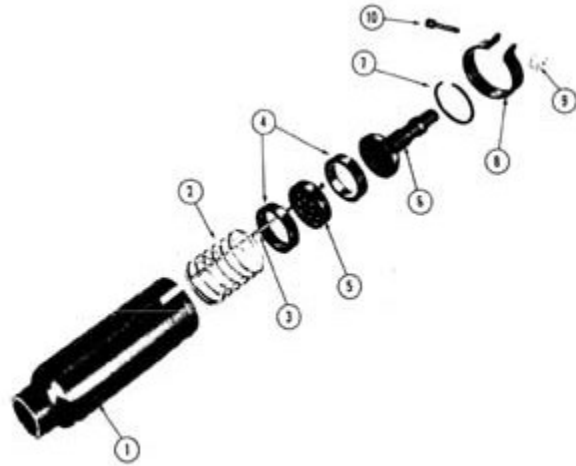
3. While holding the barrel down, install pins.
4. Place the front valve block on the pins with milled face-up.
5. Install the wafer in the rear valve block.
6. Place the rear valve block on the pins with milled face-down.
7. Screw the barrel into the handle and tighten.
8. Tighten the socket set screw.

Ordering Parts

When ordering parts, the part number, serial number, and model number must be designated.

Round Nose Attachment & Instructions

Item	Part Number	Description
1	250002	Housing
2	250004	Spring
3	250024	Needles (16 req.)
4	250008	Cushion (2 req.)
5	250003	Needle Holder
6	250010	Driver
7	250007	Retainer
8	250016	Housing Strap
9	250012	Strap Nut
10	250013	Strap Screw
11	250006	Barrel Spring

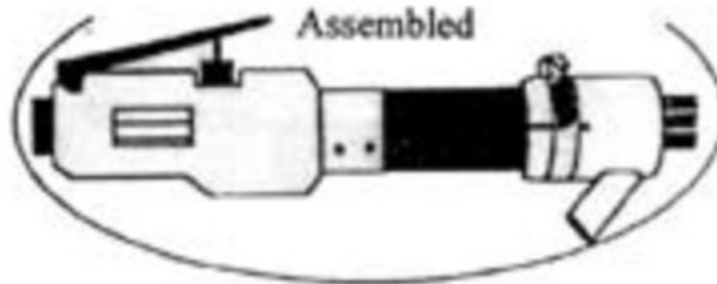
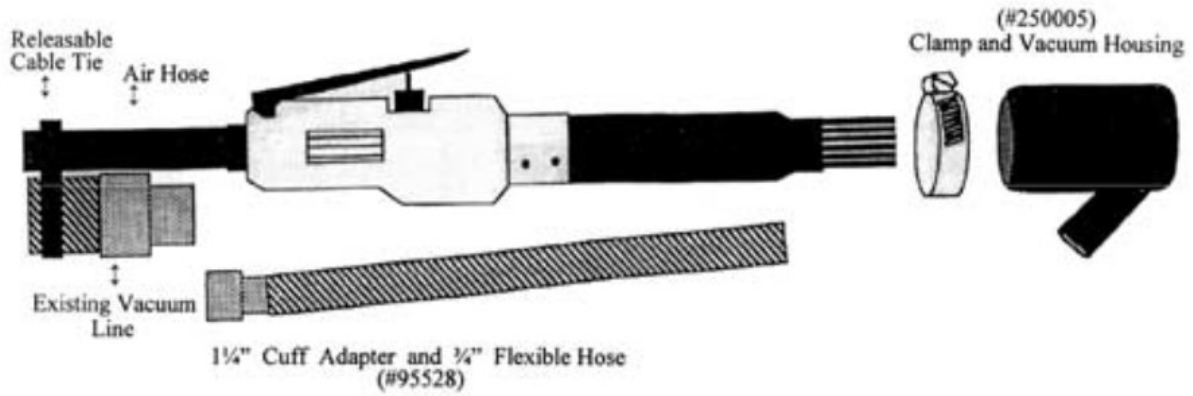


Disassembly

1. Remove the retainer (No. 250007) by prying it out with a screwdriver.
 - a. The retainer can be pried back in with a screwdriver when re-assembling.
2. Once the retainer is removed, all other parts will drop out.

Model 250200 Needle Scaler Vacuum Adapter Instructions & Parts

(For Models 240008, 250101, 250102, 250201, & 250202)



Parts Provided

Part Number	Description
250005	Clamp Vacuum Housing
95528	3/4" Flexible Hose 1 1/4" Cuff Adapter Releasable Cable Tie

Instructions

1. Slide the hose clamp over the upper end of the vacuum housing.
2. Slide the vacuum housing onto the needle scaler.
3. Adjust the hose clamp so there is a slight amount of friction between the vacuum housing and the barrel of the needle scaler.

Note: This allows some restricted up-and-down movement of the vacuum housing on the barrel of the needle scaler during use. Upward movement allows full access into corner areas and downward movement allows debris pickup when working on flat areas.

4. Attach the $\frac{3}{4}$ " flexible hose to the small exhaust port on the side of the vacuum housing.
5. Connect your existing $1\frac{1}{4}$ " vacuum line to the end of the $1\frac{1}{4}$ " cuff adapter.
6. Use the releasable cable tie to bundle the $1\frac{1}{4}$ " cuff adapter to the existing vacuum line near the handle of the needle scaler.

Note: This keeps the vacuum hose out of the operator's way and prevents the hose from being dislodged during use.