

Industrial Gas Valves

Fill Adapters for GSRPV Series

Ordering Information

Sherwood Part Number	Inlet	Outlet	Nipple Material	Pin Material	O-Ring Material	Pin Length Per CGA V1
<i>Nipples with Retractable Pin (includes brass nut as shown)</i>						
TLG580SLW*	¼" NPT	CGA 580R	Stainless Steel	Stainless Steel	Polyurethane	.834
TLG320SLWC	¼" NPT	CGA 320	Stainless Steel	Stainless Steel	Buna Nitrile	1.30
TLG590SLW*	¼" NPT	CGA 590R	Stainless Steel	Stainless Steel	Polyurethane	.834

TLG580SLW Rebuild Kit

Sherwood Part Number	Description
TL580A-30-R	Each kit includes 25 Plunger & Pin Assemblies
TL580SP	Nose Bushing Torque Spanner sold separately

Retractable Pin Adapters provide maximum operating flexibility to fill or evacuate a cylinder with either a conventional valve or a GSRPV. Engage the Pin Locking Tool (see below) and rotate the tool clockwise to depress the pin for use with a conventional valve. Or rotate the tool counterclockwise to release the pin for use with a GSRPV valve. The adapters incorporate an O-ring seal for a hand-tight connection.

Ordering Information

Sherwood Part Number	Inlet	Outlet	Nipple Material	Pin Material	O-Ring Material	Pin Length
<i>Nipples with Fixed Pin (includes brass nut as shown)</i>						
TLG320W	¼" NPT	CGA 320	Brass	Ni Plated Steel	Buna Nitrile	1.30
TLG320RW	¼" NPT	CGA 320R	Brass	Ni Plated Steel	Buna Nitrile	.45
TLG346S	¼" NPT	CGA 346	Brass	Stainless Steel	None	1.44
TLG346RS	¼" NPT	CGA 346R	Brass	Stainless Steel	None	.89
TLG350S	¼" NPT	CGA 350	Brass	Ni Plated Steel	None	1.44
TLG350RS	¼" NPT	CGA 350R	Brass	Ni Plated Steel	None	.89
TLG540B	¼" NPT	CGA 540	Brass	Monel	Buna Nitrile	1.49
TLG540RB	¼" NPT	CGA 540R	Brass	Monel	Buna Nitrile	.94

Ordering Information

Sherwood Part Number	Inlet	Outlet	Nipple Material	Pin Material	O-Ring Material	Pin Length
<i>Matching CGA Outlet and Inlet Adapter</i>						
TL580RD*	CGA 580 Female	CGA 580R Male	Brass	Ni Plated Steel	Buna Nitrile	.834
TL590RD*	CGA 590 Female	CGA 590R Male	Brass	Ni Plated Steel	Buna Nitrile	.834

Ordering Information

Sherwood Part Number	Description
TL580B	Pin Locking Tool

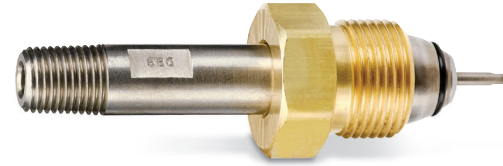
Used with Retractable Pin Adapter.

Ordering Information

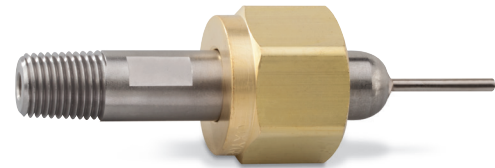
Sherwood Part Number	Description
TL580C	Checking Rod

Gas cylinders can be checked for content integrity by simply inserting the Checking Rod and pushing against the resistance of the check valve. The sound of escaping gas indicates residual cylinder pressure.

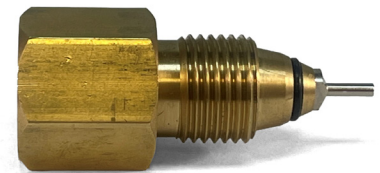
*Adapters can be used with GRPV Series



TLG580SLW



TLG346S



TL580RD



TL580B



TL580C